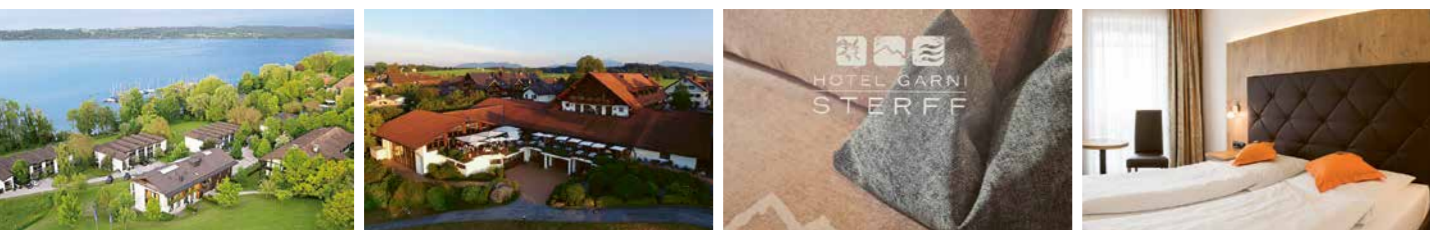


REGION SOUTHERN LAKE STARNBERG / OSTERSEEN



Marina Hotel and Lakeside Restaurant ****
82347 Bernried
T +49 (0)8158 9320
www.marina-berried.de

Landgasthof Osterseen ****
82393 Iffeldorf
T +49 (0)8856 92860
www.landgasthof-osterseen.de

Hotel Garni Sterff
82402 Seeshaupt am Starnberger See
T +49 (0)8801 90630
www.hotel-sterff.de

Stadthotel Berggeist
82377 Penzberg
T +49 (0)8856 8010
www.hotel-berggeist.de

This resort, right on the shore of Lake Starnberg, is a five-minute walk from the Buchheim Museum and offers 4-star accommodation. A fine-dining lakeside restaurant, bar and event locations are also on site.

Indulgence, nature, and genuine Bavarian hospitality—right on the shores of the Osterseen. Here, sophisticated regional cuisine blends with stylish hotel comfort and a unique location in Upper Bavaria's Five-Lakes Region.

All rooms, studios and holiday flats are cosily and comfortably furnished. Enjoy our hospitality in a family atmosphere!

The hotel has 45 cosily furnished rooms with telephone, flat-screen TV, minibar and WiFi. Guests can look forward to a varied and extensive buffet breakfast in the morning.

REGION STAFFELSEE / MURNAU



Hotel Griesbräu zu Murnau ****
82418 Murnau a. Staffelsee
T +49 (0)8841 1422
www.griesbraeu.de

Hotel Post garni ***
82418 Murnau a. Staffelsee
T +49 (0)8841 487800
www.hotel-post-murnau.de

Alpenhof Murnau ****
82418 Murnau a. Staffelsee
T +49 (0)8841 491-0
www.alpenhof-murnau.com

Klausenhof am Park ***
82418 Murnau a. Staffelsee
T +49 (0)8841 1422
www.klausenhof-murnau.de

Gabriele Münter and Wassily Kandinsky once stayed at our heritage-listed hotel, which also features a private brewery. Significant works of art were created here, in the heart of Murnau.

Situated in the pedestrian precinct and now in the 16th generation, the hotel offers guests an unforgettable stay with a blend of and contemporary styles.

Excellent food and wine list, spa with indoor and outdoor pools and a large sauna area just 10 minutes from the 'Münter-Haus'. The perfect place to relax and enjoy, and for cultural outings.

Situated directly by the spa park, and just a short walk from the Münter House and the Schloßmuseum — perfect for a relaxing short break.

REGION KOCHEL- AND WALCHENSEE



Hotel Gasthof zur Post
82431 Kochel am See
T +49 (0)8851 92410
www.posthotel-kochel.de

Landhotel Herzogstand ***
82431 Kochel am See
T +49 (0)8851 324
www.herzogstand.de

Traditional, family-run hotel in centre of Kochel am See with typically Bavarian cuisine.

Experience authentic, Bavarian hospitality and quiet, individually furnished rooms; delicious à la carte gourmet breakfast. Just 800m from the Franz Marc Museum.



Seehotel Grauer Bär ***
82431 Kochel am See
T +49 (0)8851 92500
www.grauer-baer.de

Landhotel Danner-Hof
82431 Kochel am See
T +49 (0)8851 5154
www.danner-hof.de

Located right on the lake with a spa and relaxation area with panoramic views, restaurant and lakeside terrace. Just a few minutes walk from the Franz Marc Museum. New in 2024 – SEEHAUS holiday flats with sauna.

The new Landhotel Danner-Hof on Lake Kochel is a special retreat with double rooms, one-room and larger holiday flats as well as a spacious spa area.

BUCHHEIM MUSEUM
Am Hirschgarten 1
82347 Bernried
T +49 (0)8158 9970-0
www.buchheimmuseum.de

Pfaffenwinkel
Tourismusverband Pfaffenwinkel
Bauerngasse 5, 86956 Schongau
T +49 (0)8861 211-3200
info@pfaffen-winkel.de
www.pfaffen-winkel.de

MUSEUM PENZBERG
SAMMLUNG CAMPENDONK
Am Museum 1
82377 Penzberg
T +49 (0)8856 813-480
www.museum-penzberg.de

KOCHELSEE
Tourist Information Kochel a. See
Bahnhofstraße 23
82431 Kochel a. See
T +49 (0)8851 338
info@kochel.de, www.kochel.de

FRANZ MARC MUSEUM KOCHEL AM SEE
Franz-Marc-Park 8-10
82431 Kochel a. See
T +49 (0)8851 92488-0
www.franz-marc-museum.de

Murnau am Staffelsee
Tourist Information Murnau
Untermarkt 13, 82418 Murnau
T +49 (0)8841 476-240
touristinfo@murnau.de
www.tourismus.murnau.de

SCHLOSSMUSEUM MURNAU
Schloßhof 2-5
82418 Murnau a. Staffelsee
T +49 (0)8841 476-207
www.schlossmuseum-murnau.de

LENBACHHAUS
Luisenstraße 33
80333 München
T: +49 (0)89 23396933
www.lenbachhaus.de

einfach MÜNCHEN
Landeshauptstadt München
München Tourismus
80331 München
T +49 (0)89 233-96500
tourismus@muenchen.de
www.simply-munich.com

AUSFLUGSTIPPS

1 Lake trips
Take the museum's ship, the MS 'Phantasie', across Lake Starnberg to the Buchheim Museum.



www.seenschiffahrt.de/starnberger-see

2 Rose Island and Feldafinger Park

There are two masterpieces of landscape gardening on Lake Starnberg: Rose Island and Feldafinger Park, both designed by Peter Joseph Lenné. www.roseninsel.bayern www.schloesser.bayern.de

3 Bernried on Lake Starnberg

Apart from the nearby Buchheim Museum, the gold-medal winner of Germany's 'Most Beautiful Village' competition boasts a lovely centre, an English-style landscaped park and a monastery complex – all right on the lake. www.berried.de

4 STOA169

A gigantic columned hall in the middle of the unspoilt countryside unites the whole world under one roof. 121 columns, created by internationally renowned artists, each relating its own individual message, are an open invitation to marvel, muse and enthuse 24/7. www.stoa169.com

home of the 'Blauer Reiter' – first and foremost Franz Marc – to where the artists lived and where they found their motifs and created their works. www.sindelsdorf.de

5 Polling artists' village



Yesteryear today. Former monastery buildings are home to studios, exhibitions and installations by contemporary artists as well as series of concerts of the highest standard. www.polling.de

6 Church of Christ the King and the Mosque in Penzberg

The dynamic former mining town offers a varied programme of events. Apart from the museum, a visit to the Church of Christ the King with its Campendonk windows, the Mining Museum and the impressive modern mosque are all a must. www.penzberg.de www.bergwerksmuseum-penzberg.de www.islam-penzberg.de

7 Artists' trail, Sindelsdorf

A walk through this pretty village, the birthplace and

popular lakes for swimming. Our tip: Walk the hiking trail or take a trip on the boat launch. www.staffelsee.org

12 Murnau art trail
Look for the original motifs used by Gabriele Münter and Wassily Kandinsky and compare them with their paintings on a walk around the town of Murnau. www.tourismus.murnau.de



Gabriele Münter and Wassily Kandinsky lived together in this house from 1909 until 1914. This was where the almanac, 'Der Blaue Reiter' was created, among other works of art. www.muenter-stiftung.de www.tourismus.murnau.de

9 Murnau pedestrian precinct

Remodelled by Emanuel von Seidl, this colourfully painted listed ensemble with its many little shops and cafés is now a conservation area. www.tourismus.murnau.de

10 Murnau Moor

Thanks to its size, varied landscape and its flora and fauna, this wetland moor area forms a unique entity in central Europe. Tourentipps: www.tourismus.murnau.de

11 Staffelsee

With its seven islands and warm water this is one of the most

views over turquoise-coloured lakes and blue mountain peaks. The panoramic nature trail and a break at the mountain guesthouse at both well worthwhile. www.herzogstandbahn.de www.berggasthaus-herzogstand.de

16 The Church of Wies
UNESCO World Heritage Site
The pilgrimage church of Wies dedicated to 'the Scourged Saviour' is considered the most perfect example of Bavarian Rococo architecture. www.wieskirche.de

17 Weilheim Sculpture Trail
In the idyllic countryside around Weilheim, works of art have been harmoniously integrated into the natural landscape. Created by well-known local artists, each of the majestic artworks relates to Weilheim and to nature. www.skulpturenweg.kunstforum-weilheim.de

14 The Lovis Corinth Museum in Walchensee

In the hamlet of Urfeld on Walchensee 180 original works on paper by Lovis Corinth are on display. Discover more about Lovis Corinth on a themed walk with 7 explanatory boards. www.walchenseemuseum.de www.walchensee.de

15 The Herzogstand cable car
Soar into the blue Bavarian sky and enjoy the unique 360°



views over turquoise-coloured lakes and blue mountain peaks. The panoramic nature trail and a break at the mountain guesthouse at both well worthwhile. www.herzogstandbahn.de www.berggasthaus-herzogstand.de

16 The Church of Wies
UNESCO World Heritage Site
The pilgrimage church of Wies dedicated to 'the Scourged Saviour' is considered the most perfect example of Bavarian Rococo architecture. www.wieskirche.de

17 Weilheim Sculpture Trail
In the idyllic countryside around Weilheim, works of art have been harmoniously integrated into the natural landscape. Created by well-known local artists, each of the majestic artworks relates to Weilheim and to nature. www.skulpturenweg.kunstforum-weilheim.de

18 Weilheim
The lively Old Town of Weilheim with its restored patricians' houses, partly surrounded by the ancient town walls, is an inviting place to stroll and shop. www.weilheim.de

19 Wessobrunn Abbey
The cradle of the Wessobrunn School and the site of an especially important monastery is very well preserved in part. The former abbey buildings are perfectly examples of the Baroque and Rococo styles and can be visited on guided tours. www.klosterwessobrunn.de

20 Viktualienmarkt Munich
The 'Viktualienmarkt' is a popular culinary meeting place in the heart of the city where you can

sit around the maypole amidst a sea of colours, scents and sounds. This is where fruit, vegetables and all conceivable types of delicacy can be bought for later ... or eaten straight away. www.simply-munich.com

21 'Fünf Höfe', Munich
Up-market designer stores and cafés, bars and restaurants are an open invitation to shop in an unusual atmosphere. The 'hanging gardens' create a vivid, tropical flair right next to the Kunsthalle München where temporary exhibitions of a high standard are held in this central location. https://fuenfhoefe.de/

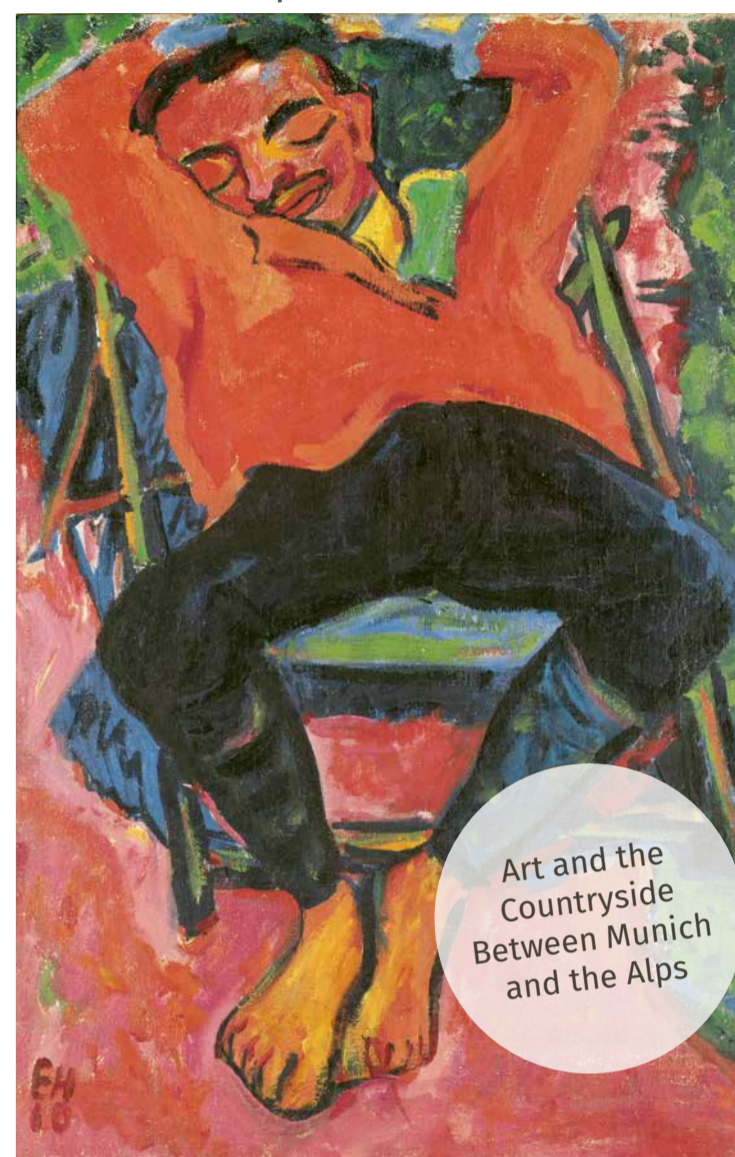
22 Schwabing, Munich
This lively district that has been shaped by artists since time immemorial calls out to be explored. In the streets and cafés around the Academy of Fine Arts, right up as far as Münchner Freiheit, this is where you will find yourself among students and creative minds, and is where the 'Blauer Reiter' artists used to meet.



23 Nymphenburg Palace and the palace park
This magnificent palace and its extensive park are a gesamtkunstwerk of international importance. The palace, park and the Café Palmenhaus are worth a visit whatever the weather – just as in the days of kings and nobles. www.simply-munich.com



MuSeenLandschaft Expressionismus



Art and the Countryside Between Munich and the Alps



IMPRINT
2026
Published by MuSeenLandschaft Expressionismus:
Tourist information offices of Kochel a. See, Murnau, Tourismusverband Pfaffenwinkel, München Tourismus, Lenbachhaus München, Buchheim Museum, Museum Penzberg – Sammlung Campendonk, Schloßmuseum Murnau, Franz Marc Museum.
Design: blist grafik & illustration, Munich
Editing: WENGMANN Kulturmanagement, Munich
Printing: Kriechbaumer Druck GmbH & Co. KG, Munich



BICYCLE TOUR IN THE TRACKS OF THE 'BLAUER REITER'

Starting in Munich and taking in Bernried, Penzberg, Murnau and Kochel, explore the countryside by bike that so inspired Franz Marc, Gabriele Münter and Wassily Kandinsky. Route length: 238 km www.museenlandschaft-expressionismus.de



Picture credits:
Cover: Erich Heckel, Sleeping Pechstein, 1910 (Detail), Buchheim Museum, Bernried
©Estate of Erich Heckel, Hemmenhofen | Bayerische Seenschiffahrt: Tourist Information Starnberg | STOA169: Photo Erwin Rittenschöber | Polling artist's village: Marian Zazeela, ©La Monte Young and Marian Zazeela 2001 | Münter-Haus: Photo Wolfgang Ehn | Kochel- and Walchensee: Tourist Information Kochel a. See, Photo Thomas Kujat | Academy of Fine Arts Munich: München Tourismus | Panorama map: ©Tourismus Oberbayern München e.V. | Staffelsee: Photo Florian Werner | Schloßmuseum Murnau, Bildarchiv, Photo: G. Pfleger | Werdenfels line: Photo Uwe Miethel | Franz Marc Museum: Photo Doris Leuschner | Kochel- and Walchensee: Tourist Information Kochel a. See, Photo Thomas Kujat | Lake Starnberg: Tourist Information Starnberg | Buchheim Museum am Starnberger See: Photo Julia Rejmer | Lenbachhaus: © Florian Holzher | München: München Tourismus, Photo Thomas Klinger | Museum Penzberg: Photo Christian Krinninger | Osterseen: Tourismusverband Pfaffenwinkel

Between Munich and the Alps

MuSeenLandschaft
Expressionismus

One of the most beautiful regions in Germany lies between the Bavarian capital and the Alps. The lush green moraine landscape with its crystal clear rivers and stunning views of the majestic mountains inspired the writer Ludwig Thoma to exclaim: "Just open your eyes; everything is beautiful!"

In the early 20th century the young Expressionists from Munich came here to paint the countryside in bold colours and shapes. Emil Nolde and Ernst Ludwig Kirchner stayed here before the 'Brücke' group of artists was established in Dresden. The 'Blauer Reiter' artists Wassily Kandinsky, Gabriele Münter, Franz Marc, Alexej von Jawlensky and Heinrich Campendonk all had particularly closely ties to this region.

'MuSeenLandschaft Expressionismus' provides a unique way to experience and enjoy both art and the countryside. The Buchheim Museum der Phantasie with its world-famous Expressionist works draws visitors to the shore of Lake Starnberg, the Franz Marc Museum on Kochelsee provides an exquisite insight into the artist's oeuvre, and the Schloßmuseum Murnau on Staffelsee with its works by Gabriele Münter and other 'Blauer Reiter' artists and the Museum Penzberg – Sammlung Campendonk, near the Osterseen group of lakes, are both major attractions too. And if you visit the Pinakothek der Moderne and the Lenbachhaus in Munich as well you will be able to marvel at an unparalleled number of works by the pioneers of German Modernism.

MuSeenLandschaft PLUS

Partner hotels | Tips for excursions
Information about partner hotels and suggestions for other excursions in the MuSeenLandschaft region can be found on the back of this flyer.

MuSeenKarte Expressionismus



With the 'MuSeenKarte Expressionismus' ticket you can explore the museums in the foothills of the Bavarian Alps. Pay the standard admission fee at the first museum and visit four other museums at reduced rates. Tickets are available free of charge at participating museums.

Werdenfelsbahn



Trains on the Werdenfels line run every hour from Munich to the 'MuSeenLandschaft Expressionismus' museums. The museums can easily be reached on foot from each respective station. The routes are signposted. Timetables: www.bahn.de/werdenfelsbahn

MURNAU – THE ARTISTS' TOWN ON STAFFELSEE

ON THE TRAIL OF WASSILY KANDINSKY AND GABRIELE MÜNTER



Nature, art and culture go hand in hand in Murnau. The picturesque area with expansive views of the Alpine range and its changing shimmering blue light, the moor around Murnau and the lake – Staffelsee – inspired the world-famous 'Blauer Reiter' artists. Franz Marc even named the region 'the Blue Land'. The pedestrian precinct with its listed buildings remodelled by Emanuel von Seidl, street cafés and shops has a southern flair and a view of the mountains, inviting visitors to while away the time.

The Schloßmuseum in the castle in the centre of the town houses an exceptional collection. Its core comprises works by Gabriele Münter, the artists of the 'Neue Künstlervereinigung München' and the 'Blauer Reiter' – including Kandinsky, Marianne von Werefkin and Alexej von Jawlensky. The works exhibited show the motifs the artists found for their pictures in Murnau and the surrounding area from 1908



Gabriele Münter
Self-Portrait 1909
Schloßmuseum Murnau
© VG Bild-Kunst
Bonn 2026



Schloßmuseum Murnau

onwards, how they became familiar with Bavarian folk art – especially reverse glass painting – and how they succeeded in taking that decisive artistic step towards a new expressive form of painting.

BETWEEN THE LAKES
KOCHELSEE AND WALCHENSEE

EXPERIENCE THE WORLD OF FRANZ MARC AND THE MODERNISTS



For Franz Marc, the 'Blue Land' – the idyllic and breathtaking stretch of countryside between Kochel, Murnau and Sindelsdorf with its lakes, moorland, hills and mountain slopes – was not just a place to breathe the country air or a destination for a day-trip. He had known it since childhood and he came back here time and again. In 1914, two years before his death, he bought a house in Ried, near Kochel, for himself and his wife Maria. The 'Blue Land' is not just inextricably linked to the 'Blauer Reiter' by name. The area around Kochel that Marc loved so much was also the starting point and source of inspiration for his art. For this reason the Franz Marc Museum in Kochel am See was founded in 1986 to present Marc's work in the surroundings that influenced him as an artist. Apart from important works by Franz Marc himself, paintings by Wassily Kandinsky, Alexej Jawlensky, August Macke and Gabriele Münter can also be seen. They mirror a fascination for a landscape that not only has a lot to offer art lovers.

The foothills of the Bavarian Alps are an idyllic stretch of countryside, set against the magnificent backdrop of the mountains – a perfect place to relax or hike. The lakes in Kochel and Walchensee are an invitation to swim or windsurf, to sample the cosy restaurants and hotels and to recharge one's batteries.



Franz Marc Museum – Art in the 20th Century

Franz Marc, Leaping Horse, 1912
Franz Marc Museum Kochel am See
On loan from a private collection

THE FIVE LAKES' REGION
AROUND STARNBERG

LAKESIDE 'LABORATORY OF THE IMAGINATION'



Alexej von Jawlensky
Head in Blue, 1912
Buchheim Museum
der Phantasie



Buchheim Museum der Phantasie

The Five Lakes' Region is the most popular destination for day-trips from Munich. The lush green hills with Lake Starnberg, Lake Ammer and a number of smaller lakes offer breathtaking views of the Alps. Unspoilt farming villages, grand villas, Baroque churches, monasteries and castles characterise this unique area. Attractive cycling and hiking trails around the lakes and in the hills as well as lakeside beaches and trips on the lakes are an eldorado for holidaymakers. South of the lakes, further art treasures wait to be discovered: the exquisite stucco of the Wessobrunn School in the former Wessobrunn Abbey, the columned hall of STOA169 in the middle of the countryside and the sculpture trail that connects the picturesque Old Town of Weilheim with the River Ammer. One undoubted highlight is the Buchheim Museum der Phantasie that Günter Behnisch, the architect of the Olympic Park in Munich, composed for a site in Bernried right on the shore of the lake. In addition to the famous collection of Expressionist works amassed by the author of »The Boats,

Lothar-Günther Buchheim, art works collected from around the world are a true eye-opener. Children love the Circus Buffi, the submarine car, the brightly coloured helicopter and the 'Laboratory of the Imagination' where they can clamber around or make their own things. An impressive list of events attracts crowds of visitors the whole year round. The romantic park surrounding the museum is perfect for a picnic.

PENZBERG NEAR THE PICTURESQUE OSTERSEEN LAKES

DISCOVER WHERE HEINRICH CAMPENDONK FOUND INSPIRATION



The area around the Osterseen lakes that stretches from Lake Starnberg southwards to the undulating foothills around Penzberg, is one of nature's real treasure troves. The 19 lakes near Iffeldorf present an impressive spectrum of colours, from silver-grey to turquoise green, set against the incomparable panorama of the Alps – a magical landscape that attracted Franz Marc to Sindelsdorf at the beginning of the 19th century. And with him his artist friends Kandinsky, Jawlensky and Münter who often spent time in the summerhouse in his garden. In 1911, at the age of 21, Heinrich Campendonk (1889–1957) came to Upper Bavaria from the Rhineland and became the youngest of the 'Blauer Reiter' artists. During his search for motifs for his paintings he was impressed by the mining town of Penzberg with its miners' houses and pitheads. His paintings from this phase were only the start of his own very independent artistic output which continued

Heinrich Campendonk, Lovers (Adda and Heinrich), 1912, Museum Penzberg – Sammlung Campendonk
© VG Bild-Kunst, Bonn 2026



Museum Penzberg – Sammlung Campendonk

into the 1950s. Since 2016 the new Museum Penzberg – Sammlung Campendonk has been home to the largest collection of his work. With his reverse glass paintings in particular he skillfully created artworks of unique beauty and fascination.

MUNICH – THE CITY OF ART AND CULTURE

FOLLOWING THE TRACKS OF THE GREAT EXPRESSIONISTS



A wealth of top-class museums and collections, displaying exhibits from Antiquity to the present day, are waiting to be explored in Munich. For many centuries, the Bavarian royal family, the Wittelsbachs, promoted the arts in the city that now boasts a centrally located 'Kunstareal' art hub with museums of world renown. This is where you will find the largest collection of works by the 'Blauer Reiter' movement, for example. The museum, partly housed in the former residence of the 'princely painter' Franz von Lenbach with its idyllic garden, is one of the most beautiful spots in the city. The house in the style of a Tuscan villa forms a stunning counterpoint to the new, gleaming golden building designed by the architectural firm Foster + Partner. Following the gift made by the artist Gabriele Münter in 1957, the museum now holds works by Wassily Kandinsky, Gabriele Münter, Alexej von Jawlensky, Marianne von Werefkin, Franz Marc, Paul Klee, August Macke and many others. Under



Franz Marc
Blue Horse, 1911
© Lenbachhaus



Lenbachhaus München

the name the 'Blauer Reiter', the history of this group of Expressionist artists found its beginnings in Munich. Today, world-famous works of art such as the 'Blue Horse' can be admired in the Lenbachhaus. The museum café, with a lovely view of the Propylaea and the Königsplatz, is an inviting place for animated discussions on what you have seen and experienced.